

Enrol your BYOD MacOS device.

Intune is a secure mobile management system that allows you to use school Wi-Fi, emails, learning applications and websites on personal devices.

These instructions will show you how to enrol a BYOD macOS device into Company Portal

Before you start, please have ready the email address and password that has been supplied to you by the College. If you do not have this information, you will not be able to successfully complete the installation.

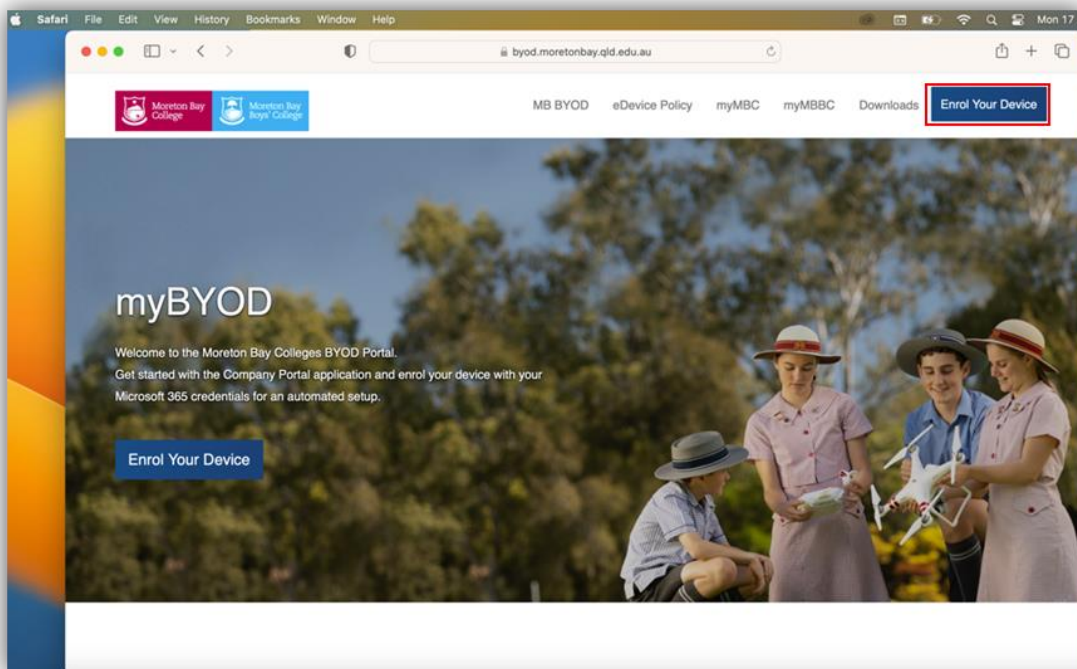
These instructions are for MacOS. You may find some of the screens look different to the ones provided here if you have an older version of MacOS or there are changes made to Intune.

If the installation fails at any time, please re-open the Company Portal app and try again.

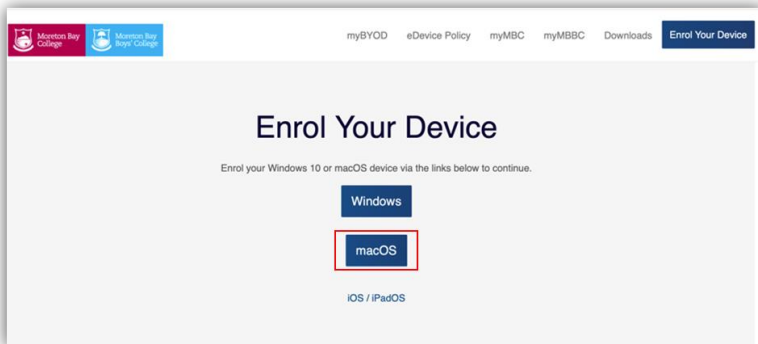
Please note: If you have any problems with installing Company Portal or its use, please contact IT for assistance.

Step 1. Install Intune

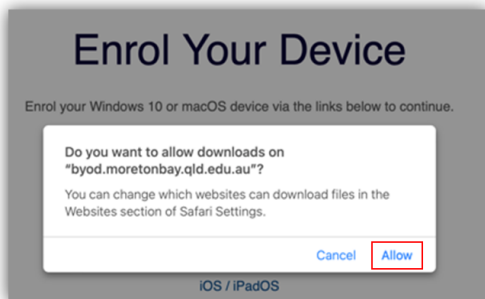
- a. Connect to the internet and browse to byod.moretonbay.qld.edu.au
- b. Click on "Enrol your Device"



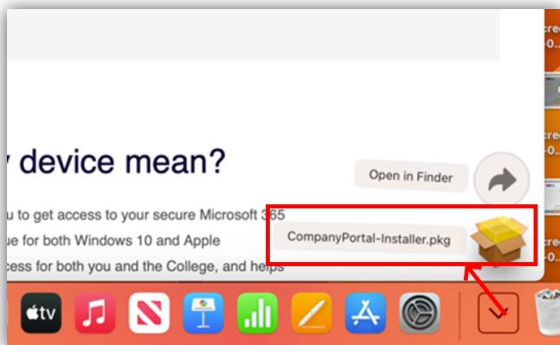
c. Click the **macOS** button.



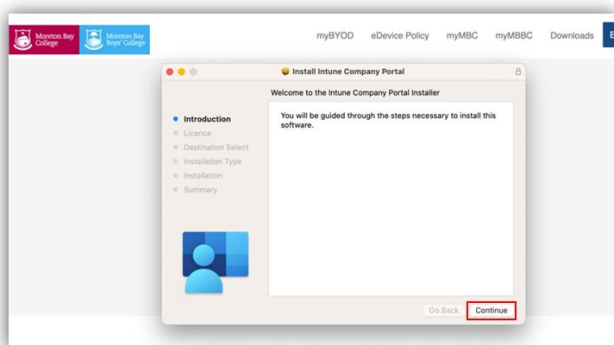
d. If prompted select **Allow**.



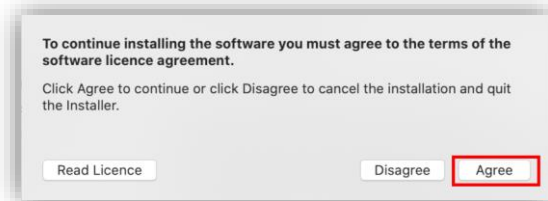
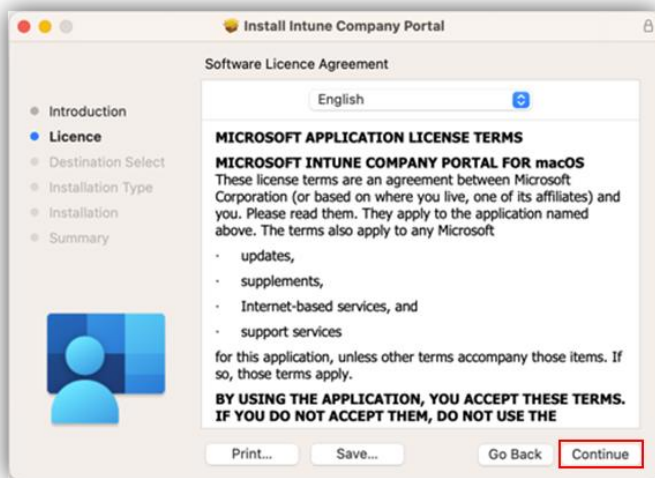
e. If it doesn't pop up automatically open downloads and click **CompanyPortal-Installer.pkg**.



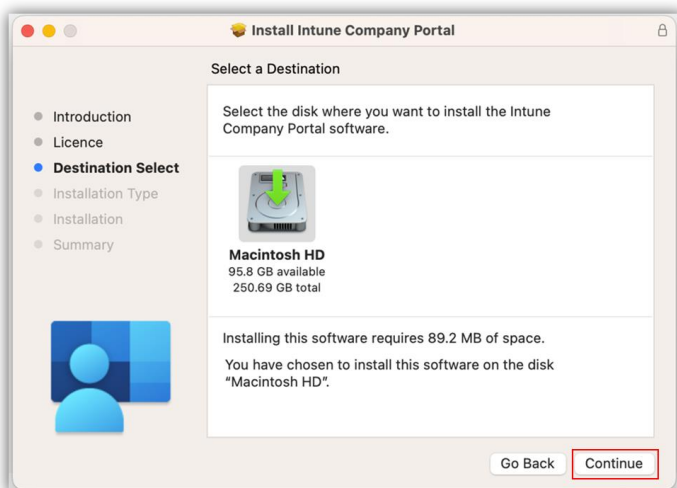
f. You should now see the "Install Intune Company Portal" screen select **Continue**.



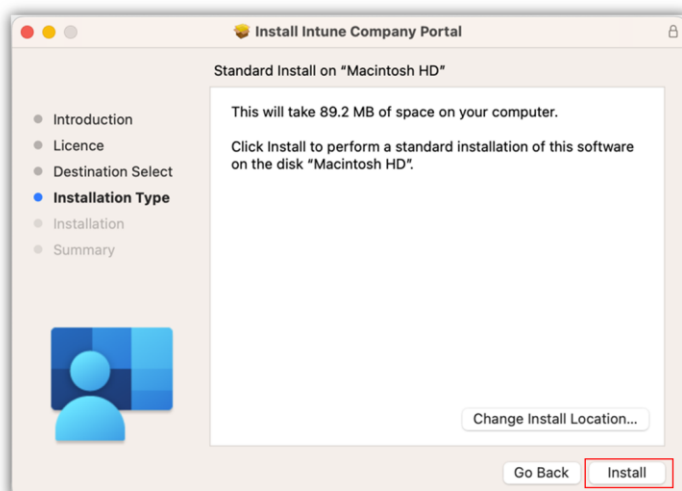
g. On the software Licence Agreement, select **Continue**.



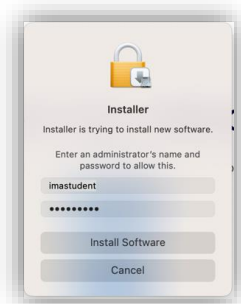
a. Select **Continue** to select where to install the software and **Agree** on the pop-up.



b. Please select **Install**.



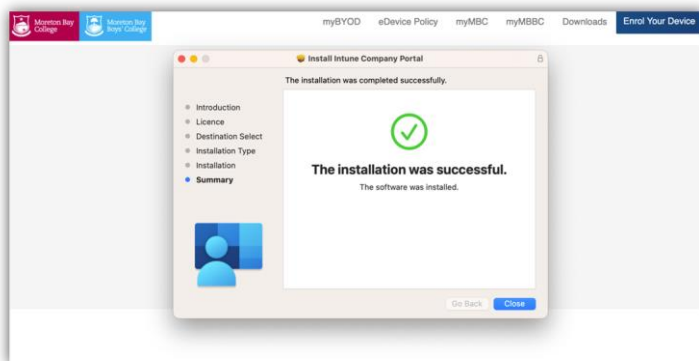
- c. You may be asked to **authenticate** to begin the installation.



- d. You may be asked for access to the download folder select **OK**.

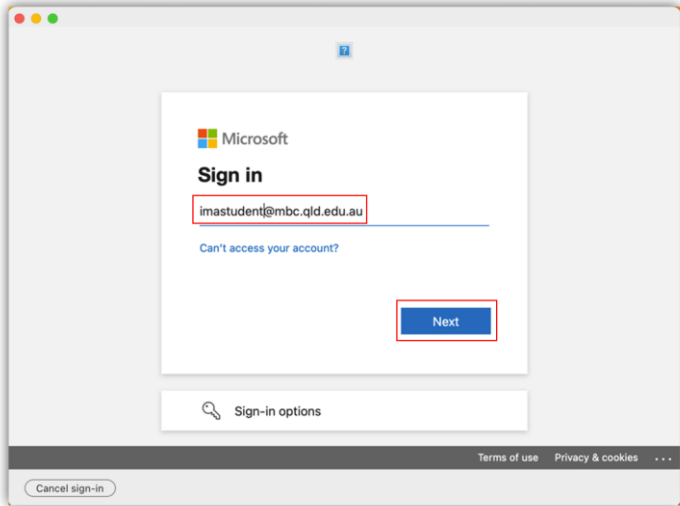


- e. You should now be looking at the following screen

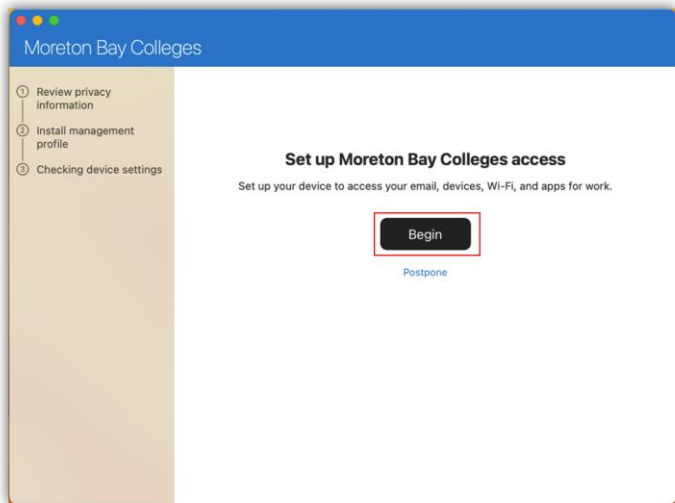


- f. You should be prompted to sign into the Company Portal, please sign in with your College email address and select **Next**.

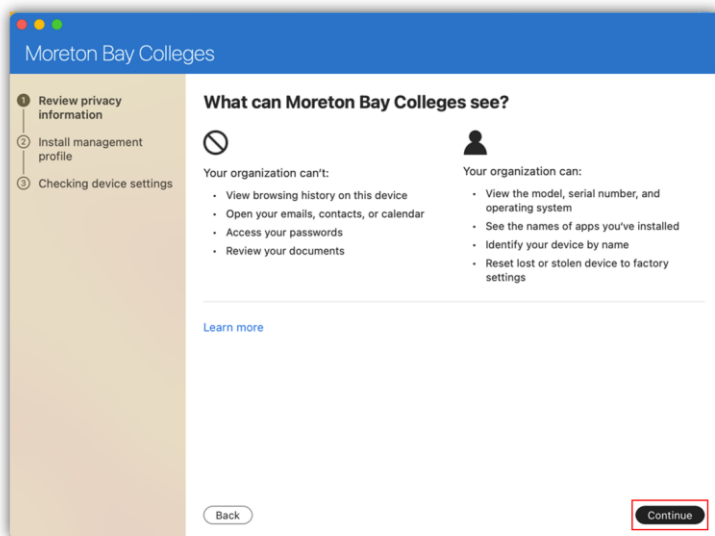
*If you are not prompted press **Command + Space** to open spotlight and type “company portal” and open the Company Portal application*



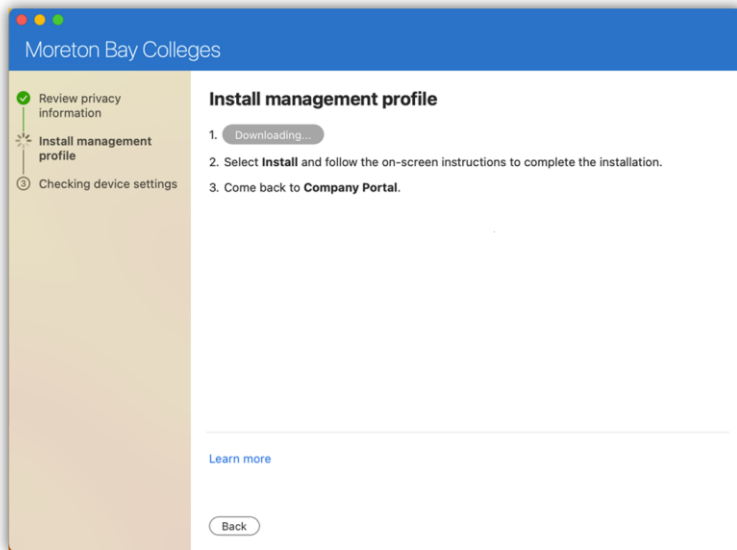
g. Please select **Next** to install the College profile



h. Check your account has been added. Your account details will be displayed, Select **Continue**.

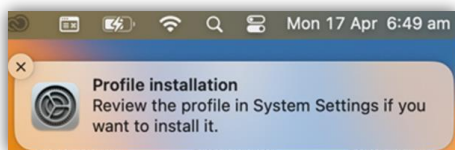


- i. The profile will now begin **Downloading**

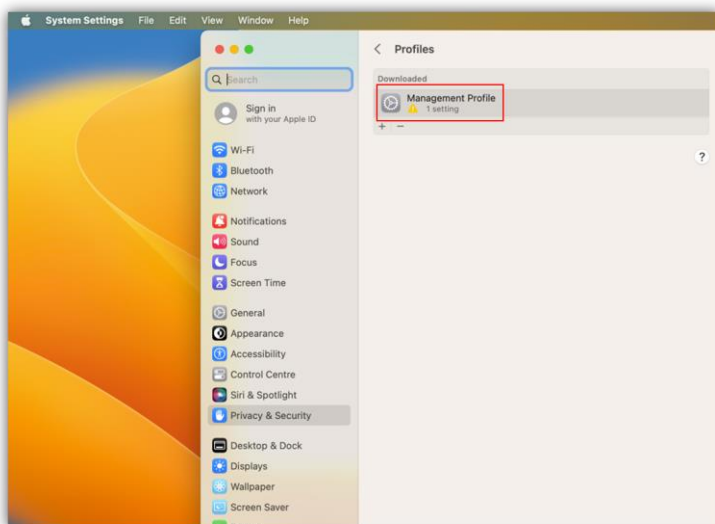


You should see a pop up on the top right of your screen, click this to go to the profiles page.

- j. You should be looking at the **Profiles** screen



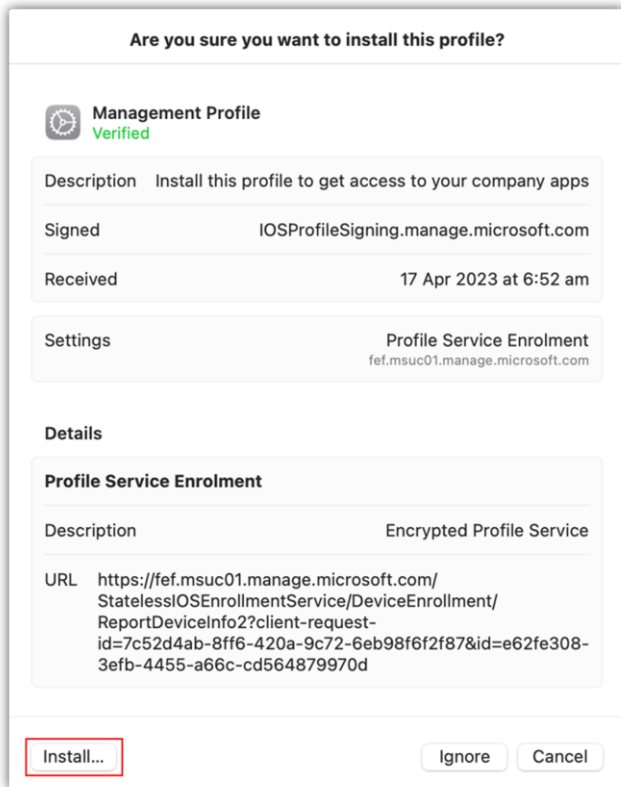
- k. You should be looking at the **Profiles** screen



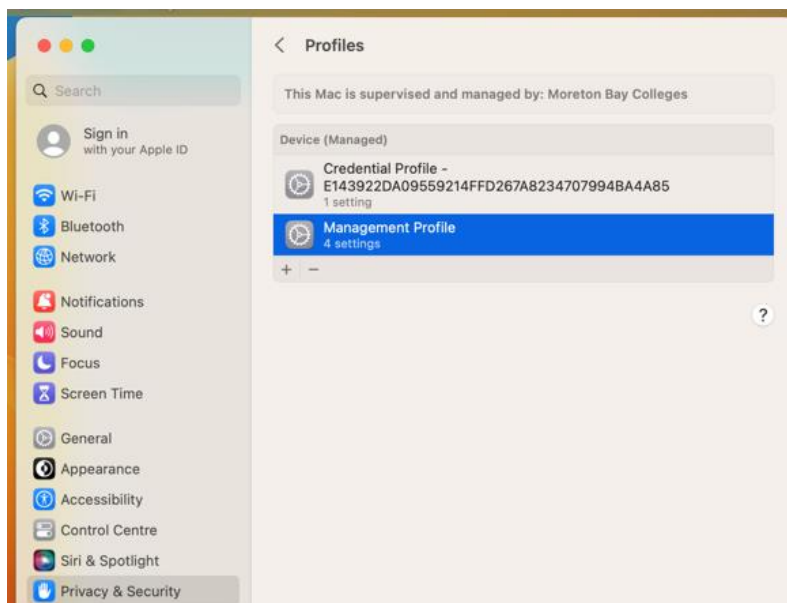
if you did not see the popup or don't see the **profiles** screen

System Settings->Privacy & Security, and scroll down to Profiles

- I. Open the profile and select **Install**, please note that you may be asked for administrators' access, if so, please login with your Mac admin username and password



If all is completed, you should now see **Management Profile**



Congratulations Enrolment complete.