

# Enrol your BYOD Windows device

Intune is a secure mobile management system that allows you to use school Wi-Fi, emails, learning applications and websites on personal devices.

These instructions will show you how to enrol a BYOD Windows device into Intune. This process may take up to 5 minutes to complete.

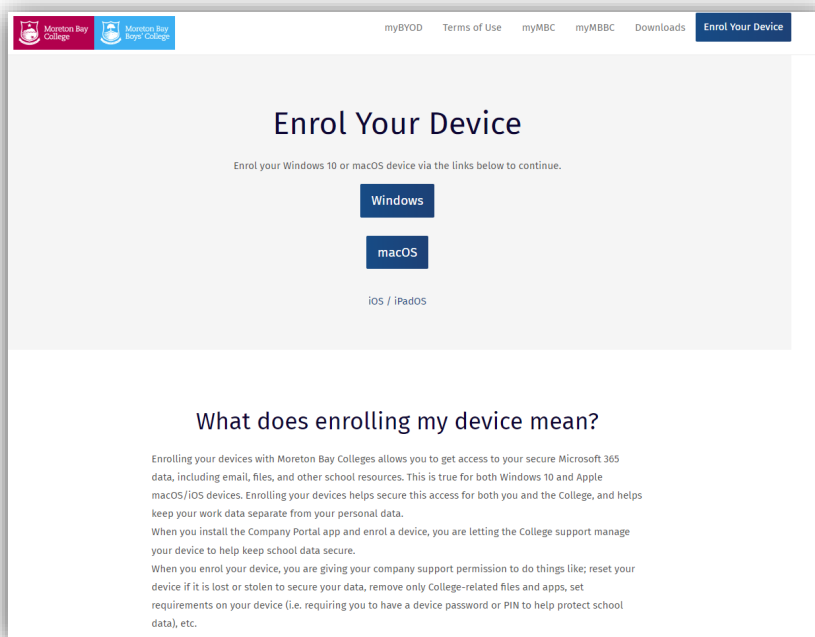
Before you start, please have ready the email address and password that has been supplied to you by the College. If you do not have this information, you will not be able to successfully complete the installation.

These instructions are for Windows 11. You may find some of the screens look different to the ones provided here if you have an older version of Windows or there are changes made to Intune.

If the installation fails at any time, please re-open the Intune app and try again.

**Please note:** If you have any problems with installing Intune or using it afterwards, please contact IT for assistance.

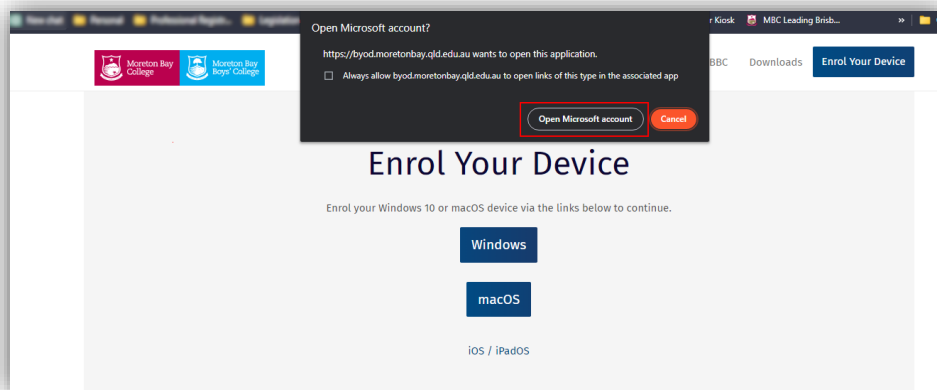
1. Open a web browser and goto [byod.moretonbay.qld.edu.au](https://byod.moretonbay.qld.edu.au)



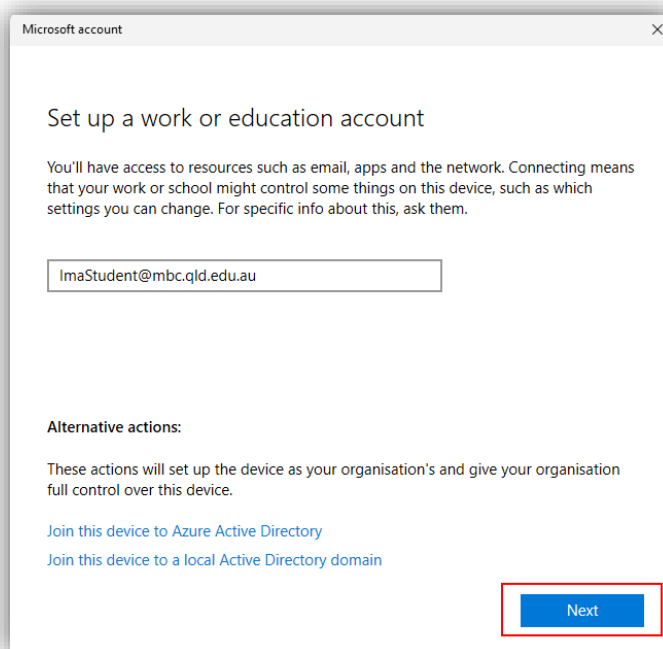
2. For windows devices please select **Windows**



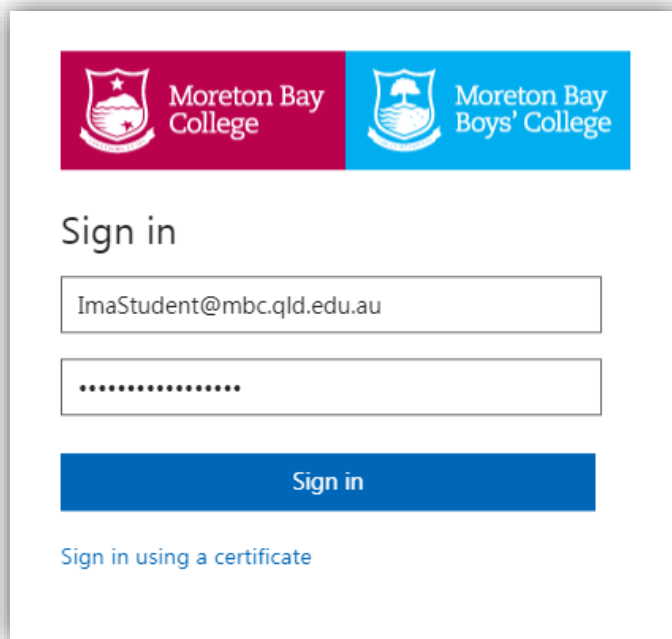
3. If prompted by the web browser select **Open Microsoft Account**



4. Enter your school email address IE: [user@mbc.qld.edu.au](mailto:user@mbc.qld.edu.au) or [user@mbc.qld.edu.au](mailto:user@mbc.qld.edu.au) and select **Next**.

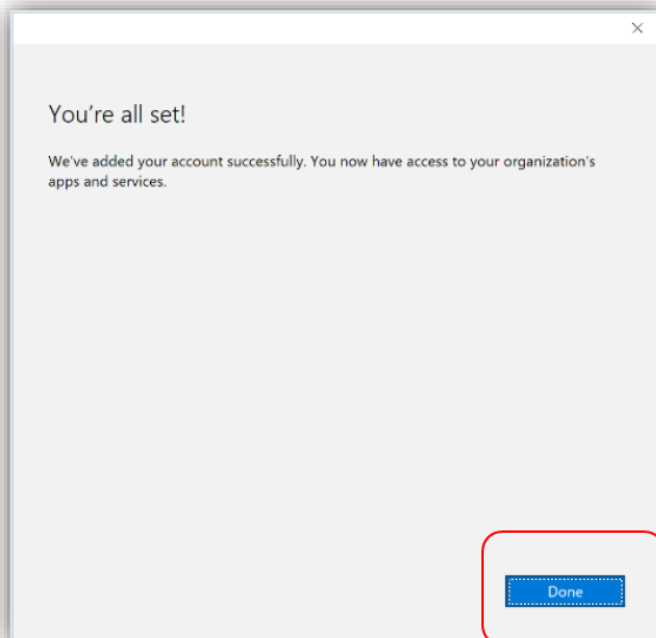


5. Please enter your username, password, accept the terms and conditions, and **Sign in**.



The sign-in form features a header with the logos of Moreton Bay College (red) and Moreton Bay Boys' College (blue). Below the header, the text "Sign in" is displayed. There are two input fields: the first contains the email address "ImaStudent@mbc.qld.edu.au", and the second contains a masked password represented by ten dots. A blue "Sign in" button is positioned below the password field. At the bottom of the form, there is a link that reads "Sign in using a certificate".

6. Please select **Done**.



A success message dialog box with a light gray background and a close button (X) in the top right corner. The text inside reads: "You're all set!" followed by "We've added your account successfully. You now have access to your organization's apps and services." In the bottom right corner, there is a blue button labeled "Done", which is highlighted by a red rounded rectangle.